

VT. 3.11.1*NOTA: será la puerta G en planta 5ª 5 UDS

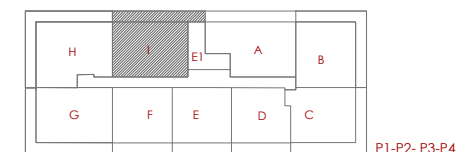
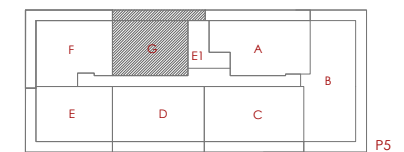
Resumen Sup. Útiles

| | |
|--------------------|----------------------------|
| Sup. Útil Interior | 61,70 m ² |
| Sup. Útil Exterior | 15,90 m ² |
| TOTAL | 77,60 m² |

Resumen Sup. Construidas

| | |
|--------------------------------|-----------------------------|
| Sup. Construida Interior | 72,40 m ² |
| Sup. Construida Exterior | 17,20 m ² |
| TOTAL con Espacio Común | 100,06 m² |

| | | | |
|---|---|---|---|
|  |  |  |  |
| 2 | 1 | 2 | 15,90 |



DIN-A3
1/50



Gesbro
Comprometidos con tu casa

