

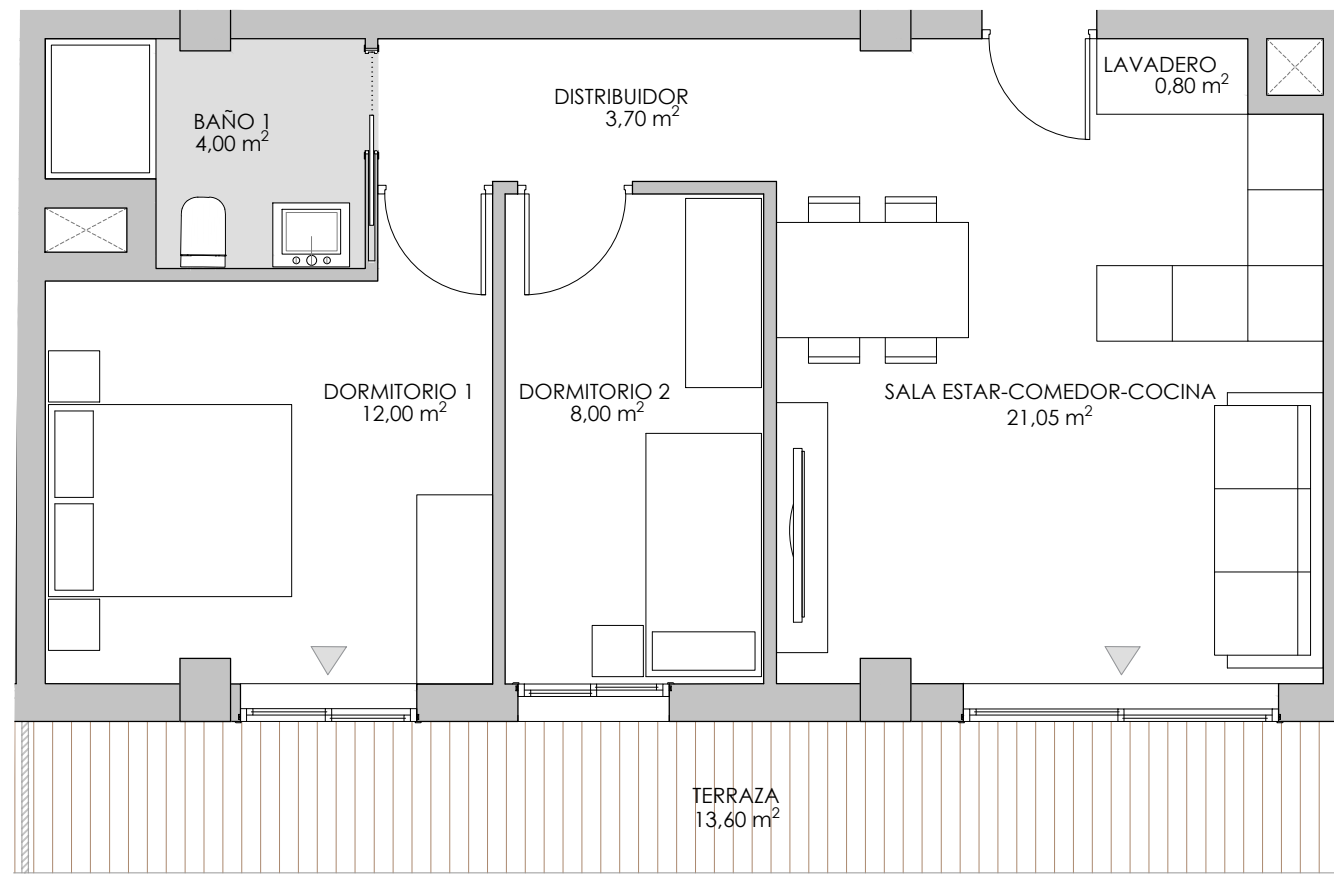
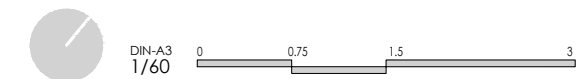
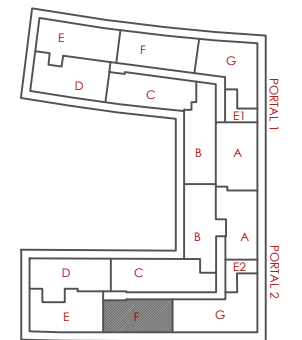
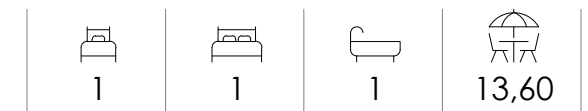
VT. 2.3 5 uds

Resumen Sup. Útiles

Sup. Útil Interior	50,35 m ²
Sup. Útil Exterior	13,60 m ²
TOTAL	63,95 m²

Resumen Sup. Construidas

Sup. Construida Interior	57,75 m ²
Sup. Construida Exterior	15,90 m ²
TOTAL con Espacio Común	86,05 m²



Gesbro
Comprometidos con tu casa